

WEIGH FEEDER

MODEL WFA 402



- Highly accurate and reliable design
- AC Gearmotor • Low profile design
- Fully enclosed option
- Dust tight version
- 1:20 control range (95% turn down)
- Self aligning and tensioning weigh feeder

Application

Weighfeeders can be configured to continuously control the feed of material, measure a feed rate or batch a quantity of material into industrial process.

The sturdy, reliable design makes the WFS 400 suitable for the use in the following industries:

Quarry, Sand and Gravel

Chemical

Wheat and Grain

Livestock feeds

Mining and Minerals

Over volumetric feeding devices, the application of weigh feeders results in improved final product

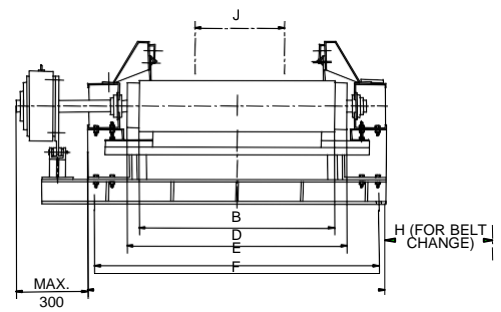
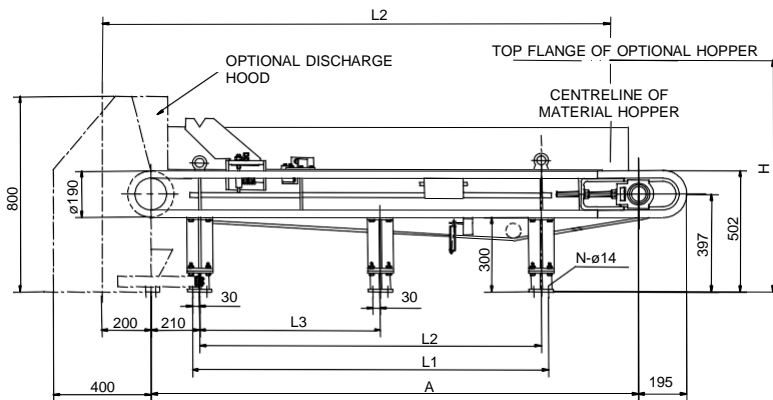
Operating Principle

The belt load (q , kg/m) is accurately measured via a single weigh idler mounted on two stainless steel load cells. The non drive side of the motor is fitted with a speed sensor which accurately measures the speed (v , m/s). These two signals are then connected to the controller which accurately evaluates the feed rate (I , t/h). The controller then sends a closed loop control magnitude (PID, mA) to either direct coupled drive or the pre feeder.

The infeed hopper is configured to suit the specific material to be fed, including vibrating hoppers for wet/sticky material and dust settling chambers for fine materials prone to flushing.



Standard Dimensions

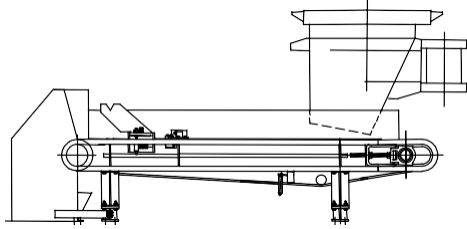


Axle Centres (Nominal)								Belt widths				
A	130	20	270	350	400	450	50					
	0	00	0	0	0	0	00					
L	760	14	216	296	346	396	44					
1		60	0	0	0	0	60					
L	700	14	210	290	340	390	44					
2		00	0	0	0	0	00					
L	N/A (two support legs)			140	210	210	21					
3				0	0	0	00					
L	120	19	260	340	390	440	49					
4	0	00	0	0	0	0	00					
N	8	8	8	12	12	12	16					
B								650	800	1000	1200	1400
D								800	950	1150	1350	1550
E								1010	1160	1360	1560	1760
F								1070	1220	1420	1620	1820
J								350	500	700	900	1100
H								850	1000	1200	1400	1600

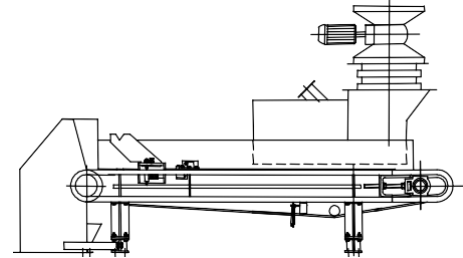


Dimensions and specifications are subject to change without notice.

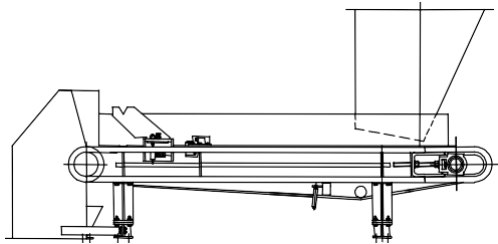
Material Feed Hopper Configurations



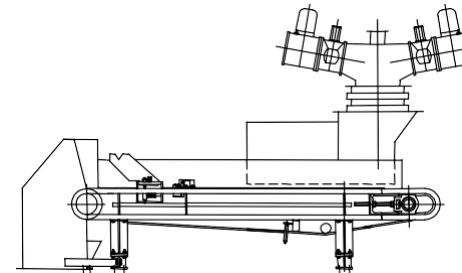
Discharge Hopper for free flowing materials



Star feeder with settling (dust control) chamber for finepowders, meal or dust



Vibrating Hopper for Wet/Sticky Materials



Flow Control Gate with settling chamber



WWW.NIYANCELL.COM
Ritter Strasse 20-26 04509
Leipzig Germany
Tel: +49 341 2564757
Email: Info@NIYANCELL.COM



Type: WF/WB 400/I/V

WEIGHING CONTROLLER NIYANCELL

